



財團法人
基督教芥菜種會
The Mustard Seed Mission

The Mustard Seed Mission(MSM)

COVID-19

Response Strategies of Shelter Homes

Mr. Torbors Chuan
Director, Community Assistance Dept.

Ms. Daisy Su
Director, Agape Children's Home

Mr. Benson Wu
Leader, Community Disaster Prevention & Reduction Section(CDPRS)

Research and Development Dept.

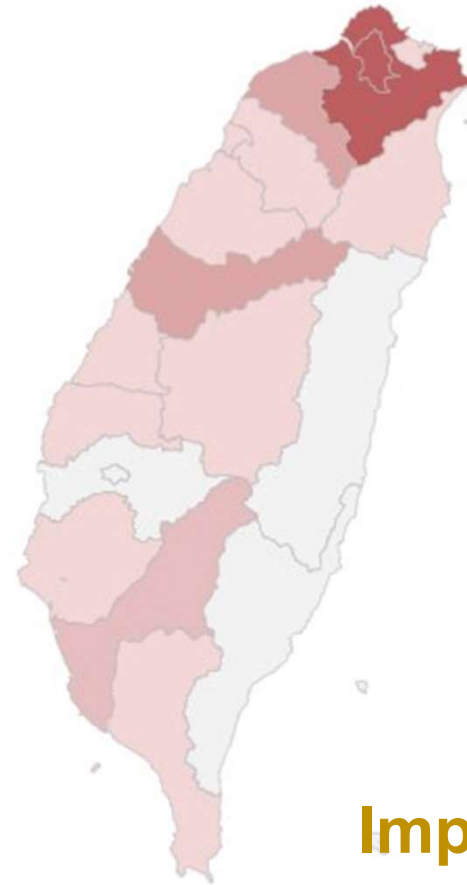
Content

- A Latest COVID-19 Statistics in Taiwan**
- B MSM's Response Structure**
- C Introduction to MSM's Shelter Homes**
- D Preventive Measures of MSM'S Shelter Homes**
- E Actions Taken by Date**
- F Discussions**

A. Latest COVID-19 Statistics in Taiwan

County/City	Confirmed Cases
臺北市 Taipei City	58
新北市 New Taipei City	55
臺中市 Taichung	25
桃園市 Taoyuan	24
高雄市 Kaohsiung	14
彰化縣 Changhua	9
臺南市 Tainan	9
新竹市 Hsinchu City	5
屏東縣 Pingtung	5
新竹縣 Hsinchu County	3
苗栗縣 Miaoli	2
南投縣 Nantou	2
基隆市 Keelung	1
宜蘭縣 Yilan	1

Total 235



133



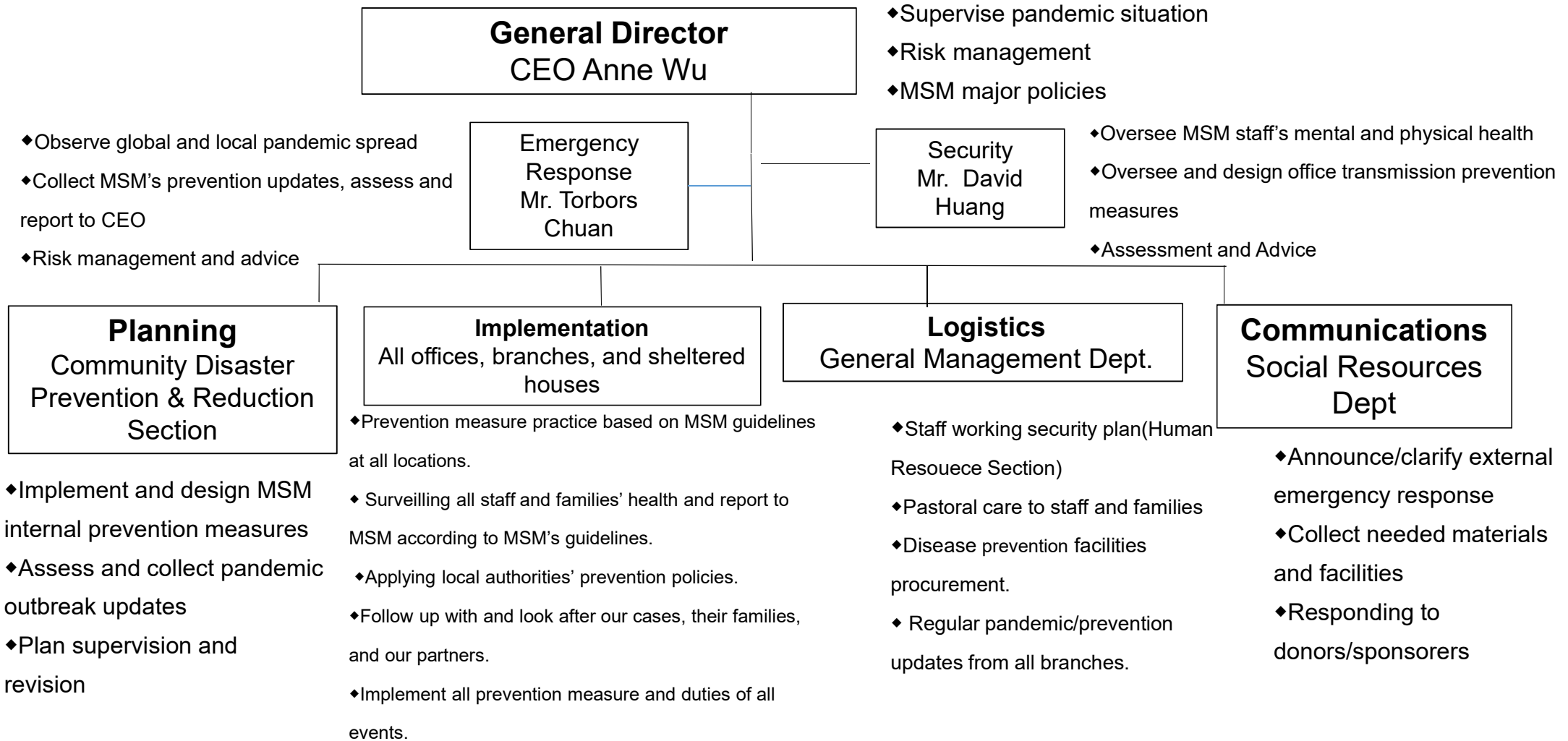
102

Imported 197

Local Transmissions 38

Updated: 25th March, 2020

B. MSM's Response Structure



C. Introduction to MSM's Children/Youth's Shelter Homes

MSM has four children and youth shelter homes- Agape Children's Home, Mustard Seed Youth Home, Pei-Hsin Home, and Iro Iro Support Program. The former two have the most children and youth.

Shelters	Number of children/youth	Staff	Total	Location	Local Confirmed Cases
Agape Children's Home	26	21	47	New Taipei City	55
Mustard Seed Youth Home	21	15	36	Hualien	0

Staff : Director, administrators(cooks and logistics), social workers, and carers.



D. Preventive Measures of MSM'S Shelter Homes



6 Stages of Prevention

1st Level

Central government announces possibility of community transmission.

2nd Level

Confirmed case in a city/county where the home is located or where employees of the home reside.

3rd Level

Confirmed case in a township/town/district/borough where the home is located or where employees of the home reside.

4th Level

Confirmed case at a school attended by a resident of the home or in the building where an employee of a home resides.

5th Level

Confirmed case at a shelter. Based on government regulations, a 14-day quarantine will begin.

6th Level

Quarantine shall be lifted based on related government regulations (after 14 days of at-home quarantine have been completed and individuals are confirmed to not be infected)

E. Actions Taken by Date

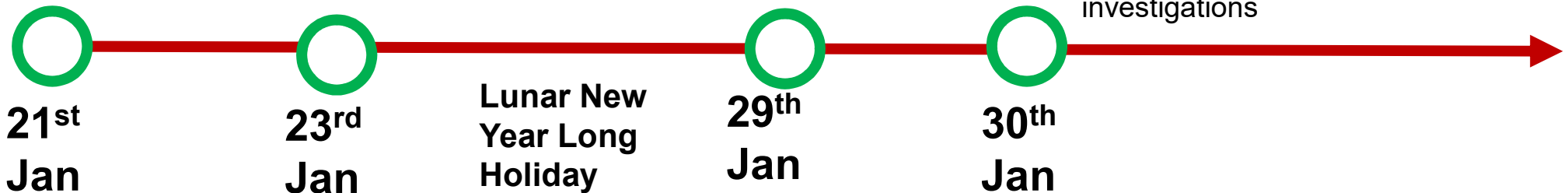
**Taiwan's
first case
confirmed**

MSM's Shelters' Response:

1. Disease prevention promotion in shelters: videos and picture books
2. Hands-wash training
3. Masks in enclosed spaces
4. Replace mugs in reception area with disposables.
5. Amendments made for Lunar New Year celebration: activities in enclosed indoors space outside shelter are avoided.

MSM's Shelters' Response:

1. Continues disease prevention promotions.
2. Sterilization
3. All staff with masks while receiving visitors
4. Daily temperature measure and record.
5. Notice posters posted: visitors required to disinfect, measure temperature, and register basic info.
6. Masks, alcohol, and forehead thermometers prepared.
7. Collaborate with government's investigations



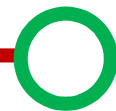
E. Actions Taken by Date

MSM's Shelters' Response:

1. Prepare portable size of alcohols for children to carry with.
2. Masks wearing when going out.
3. Set up sterilizing alcohol station in all public areas.
4. Staff's overseas travel history monitored. Report in case of fevers.
5. Juggling sessions held to improve immunization.
6. Follow up and observe situation of the community.
7. Apply governments inspections on prevention measures.



2/1



2/18



2/29

MSM's Shelters' Response:

1. Set up guidelines for pupils returning to shelter from schools.
2. Set up sterilizing area for pupils returning to shelter.
3. Regular discussions with children and youth on Taiwan's pandemic.
4. All staff to wear masks at working hours.
5. Plan procedures for quarantine and response at different pandemic levels.
6. Recruit donations for sleep bags and tents.



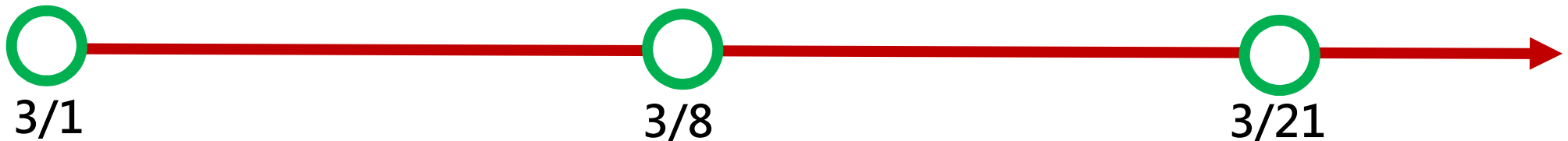
E. Actions Taken by Date

MSM's Shelters' Response:

1. All visitors to wear masks
2. Avoid big hospitals for treatments rehabilitations unless necessary.
3. Temporarily suspend volunteering and other activities inside shelters.
4. Replace children and youth eating in dinning halls with room-delivery meals taken in each room.
5. Meals seating planned.(seating is fixed; changes are not allowed)
6. All staff to measure temperatures twice a day.
7. All rooms desterilize twice daily.

MSM's Shelters' Response:

1. Identify nearby medical resources for mild, medium, and severe symptoms respectively.
2. Discuss response procedures of severe pandemic with authorities .
3. Plan staff duties at different stages of disease prevention.
4. Identify human resource needed in case of home isolation/ quarantine.



E. MSM's prevention measure timeline and response

Plans of Home Quarantine:

- All staff and children/youth to live in single rooms
- All rooms be equipped with ear thermometers and recording tables
- Separate showering space
- Separate laundry space
- Set up waste collection plan
- Replace dishes with disposables
- Sterilize all shelter facilities every 4 hours
- Report to authorities immediately in case of any fever or respiratory symptoms
- Store food and daily essentials for 2 weeks.
- Recruit or purchase partitions or tent in order to compliment room shortage.



04

搭配簡易隔間帷幕

可適用於各種家庭，保有個人隱私

F. Discussions